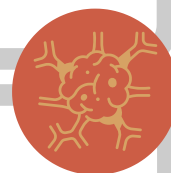


# Symptoms: Kidney



## KIDNEY TUMOURS

- BHD is associated with an **increased risk of kidney cysts and tumours**. Around 1 in 3 people with BHD will get kidney cancer. It is recommended that BHD patients have regular scans to detect any cancer as early as possible.
- Kidney tumours associated with BHD are often multifocal and occur in both kidneys but are normally **slow growing, rarely spread and not aggressive**.
- The most common symptoms of kidney cancer include:
  - blood in your urine
  - pain below your ribs
  - a lump or swelling in your side
  - unexplained weight loss
- Other symptoms of kidney cancer include: extreme tiredness, high blood pressure, night sweats and fever.



## TYPES OF KIDNEY TUMOUR

The majority of BHD-associated kidney tumours are **chromophobe, oncocytoma or a mixture of the two**. These types of tumours are usually slow growing and don't often spread to other areas. They are still normally removed once they reach 3 cm in size as they can affect the function of the kidneys.

Rarely, people with BHD get clear cell or papillary forms of kidney tumour. These are more aggressive and are more likely to spread. However, with regular scans, these tumours will be found and removed early, reducing the likelihood of them spreading.

### Testing

To determine the type of tumour, a biopsy is taken or the tumour is surgically removed, and is sent to a pathology lab for testing. The pathologist will also be able to determine the stage and grade of the tumour which is an assessment of how advanced the cancer is.

With routine monitoring of the kidneys, **the outcome for BHD-related kidney cancer is generally good**.

The BHD foundation is here to support you throughout your BHD journey .

Please visit our website for more information, or get in touch with us by email or twitter.



[BHDSYNDROME.ORG](http://BHDSYNDROME.ORG)



[@BHDSYNDROME](https://twitter.com/BHDSYNDROME)



[CONTACT@BHDSYNDROME.ORG](mailto:CONTACT@BHDSYNDROME.ORG)

The BHD foundation is run by the  
**myrovlytis trust**